

"STITCH IN THE AETHER", Matthias Bitzer, Sebastian Hammwöhner, Michael Sailstorfer, Gabriel Vormstein



- INFO
- KUNSTHALLE
- GALLERY
- ESPAI
- STUDIOS
- SHOP
- EVENTS
- CAFÉ

General information Location Agenda Press News Contact CCA Club

AGENDA

<< August, 2019 >>

M	T	W	T	F	S	S
			1	2	3	4
5	6	7	8	9	10	11
12	13	14	15	16	17	18
19	20	21	22	23	24	25
26	27	28	29	30	31	

Search CCAndratx.com

NEWS

CONSTANZE WAEGER, "Ontology. A study of becoming"

29.06.19 - 15.09.19

We cordially invite you to the opening on Saturday, June, 29th between 7 and 9pm at the CCA Espai "Ontology" ...

"STITCH IN THE AETHER", Matthias Bitzer, Sebastian Hammwöhner, Michael Sailstorfer, Gabriel Vormstein

25.05.19 - 01.09.19

CCA Andratx is excited to present a group show featuring new works by Matthias Bitzer, Sebastian ...

You are here: » Inicio » Agenda » **Collaborations & Interventions**

Collaborations & Interventions

07.04.12 - 23.09.12

A project by Friederike Nymphius, Berlin

Artists: Art & Language, Assume Vivid Astro Focus, Bernadette Corporation, André Butzer, Marieta Chirulescu, Matt Connors, Raphael Danke, Michael Elmgreen & Ingar Dragset, Peter Fischli & David Weiss, Sylvie Fleury, Mark Flood, Claire Fontaine, Leo Gabin, Gelitin, Rodney Graham, Amy Granat, Guyton(Walker, Stefan Hablützel, Isabell Heimerding, Thomas Helbig, Richard Hell, Uwe Henneken, Gregor Hildebrandt, Irwin, Xylor Jane, Sergej Jensen, Jacob Kassay, Jiří Kovanda, Alicja Kwade, Leigh Ledare, Paul McDevitt, Jonathan Meese, Henrik Olesen, Manfred Pernice, Jan van der Ploeg, Cornelius Quabeck, Anselm Reyle, Elodie Seguin, Gerwald Rockenschau, Gedi Sibony, Michal Skoda, Martin Städteli, Katja Strunz, Superflex, Gert & Uwe Tobias, Fredrik Værsvlev, Franz West, Christopher Wool.

Collaborations & Interventions is an international group show developed especially for Kunsthalle Andratx. The show will explore different types of collaboration and intervention by about 40 international artists and groups from the late 60's to the present.

Since the mid-60s the work of artist groups has been marked by subversive political statements, appropriations of works and forms from high and popular culture as well as a radical treatment of the idea of the collective. In the following years these strategies have been extended by single artists with interventionist or performative elements without losing a subtle political context.

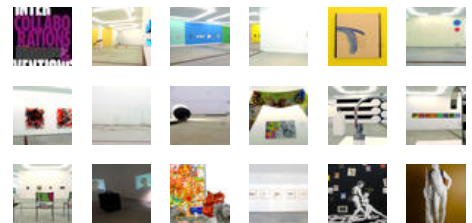
Many artist groups share a lengthy experience of working together. They have developed a specific language, in which individual powers are transformed into a collective entity.

Beside existing works of art groups, the show will present new collaborations as well, and vary depending on the relationship between the particular artists. The works represent the results of productive artistic examinations, showing the confrontation between different personalities, materials and intentions.

In collaboration with the Austrian based artist Gerwald Rockenschau a unique intervention will be made in the form of a wall painting that will function as a holding medium for small paintings, collages and works of paper by approximately 15 different artists.



Courtesy Paul Snowden



Follow @CCANDRATX

CCA Andratx
 72 opiniones

Ver mi perfil en